



For example:

```
#####  
# Studio - Configuration for the Dashboard  
#####  
  
STUDIO_DEFAULT_ORGANIZATION=Default Organization  
STUDIO_DEFAULT_PROJECT=Default Project  
  
STUDIO_PORT=3000  
# replace if you intend to use Studio outside of localhost  
SUPABASE_PUBLIC_URL=http://54.174.201.24:8000  
  
# Enable webp support  
IMGPROXY_ENABLE_WEBP_DETECTION=true
```

### \*\*\*Save & Exit

4. In the same directory, start Docker:

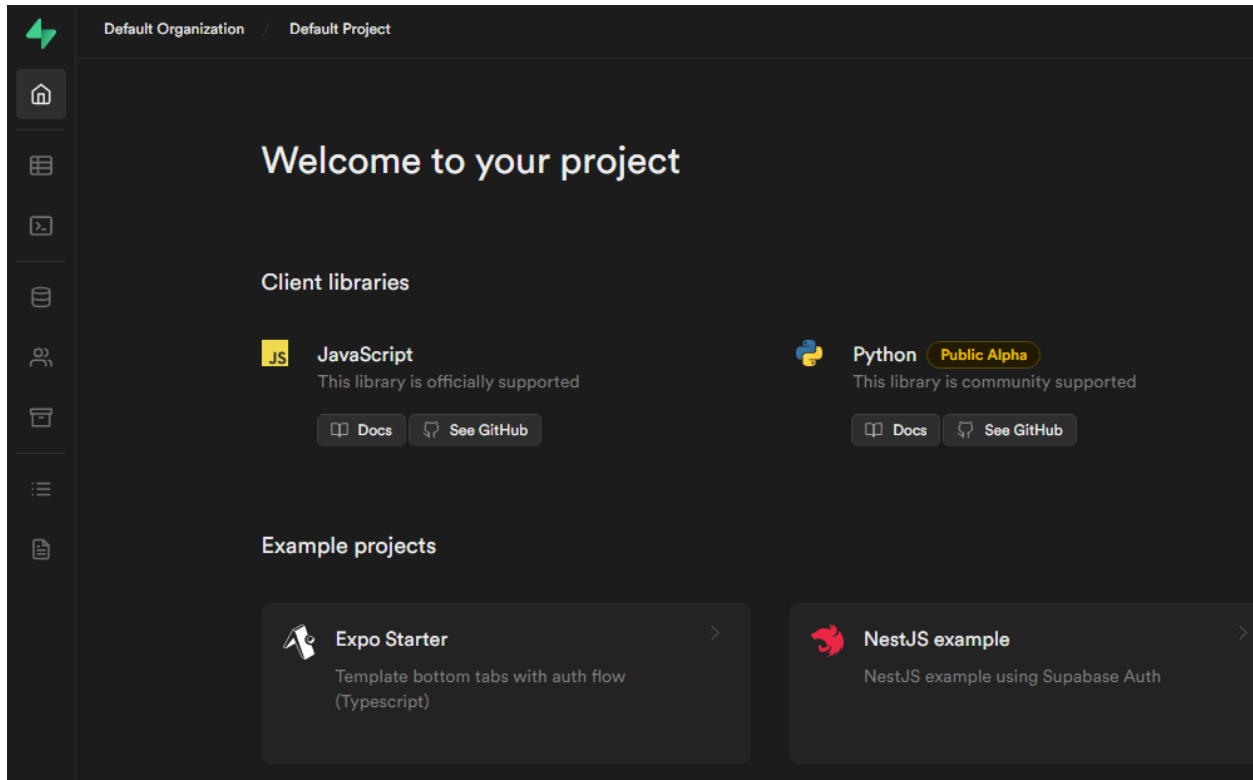
```
sudo docker-compose up -d
```

5. Wait until its complete:

```
Creating network "docker_default" with the default dri  
Creating supabase-db ... done  
Creating supabase-kong ... done  
Creating supabase-imgproxy ... done  
Creating supabase-studio ... done  
Creating realtime-dev.supabase-realtime ... done  
Creating supabase-auth ... done  
Creating supabase-meta ... done  
Creating supabase-rest ... done  
Creating supabase-storage ... done
```

6. In a web browser, go to your Instance Public IPv4 address:**3000** to view the Supabase GUI.

- For example: <http://54.174.201.24:3000>



## **To shut down**

sudo docker-compose down

sudo docker-compose up -d --build

## **AWS Data**

- Data Encryption Configuration: This solution does not encrypt data within the running instance.
- User Credentials are stored: /root/.ssh/authorized\_keys & /home/ubuntu/.ssh/authorized\_keys
- Monitor the health:
  - Navigate to your Amazon EC2 console and verify that you're in the correct region.
  - Choose Instance and select your launched instance.
  - Select the server to display your metadata page and choose the Status checks tab at the bottom of the page to review if your status checks passed or failed.

## **Extra Information: (Optional)**

### **Allocate Elastic IP**

To ensure that your instance **keeps its IP during restarts** that might happen, configure an Elastic IP. From the EC2 console:

1. Select ELASTIC IPs.
2. Click on the ALLOCATE ELASTIC IP ADDRESS.
3. Select the default (Amazon pool of IPv4 addresses) and click on ALLOCATE.
4. From the ACTIONS pull down, select ASSOCIATE ELASTIC IP ADDRESS.
5. In the box that comes up, note down the Elastic IP Address, which will be needed when you configure your DNS.
6. In the search box under INSTANCE, click and find your INSTANCE ID and then click ASSOCIATE.
7. Your instance now has an elastic IP associated with it.
8. For additional help: <https://docs.aws.amazon.com/AWSEC2/latest/UserGuide/elastic-ip-addresses-eip.html>